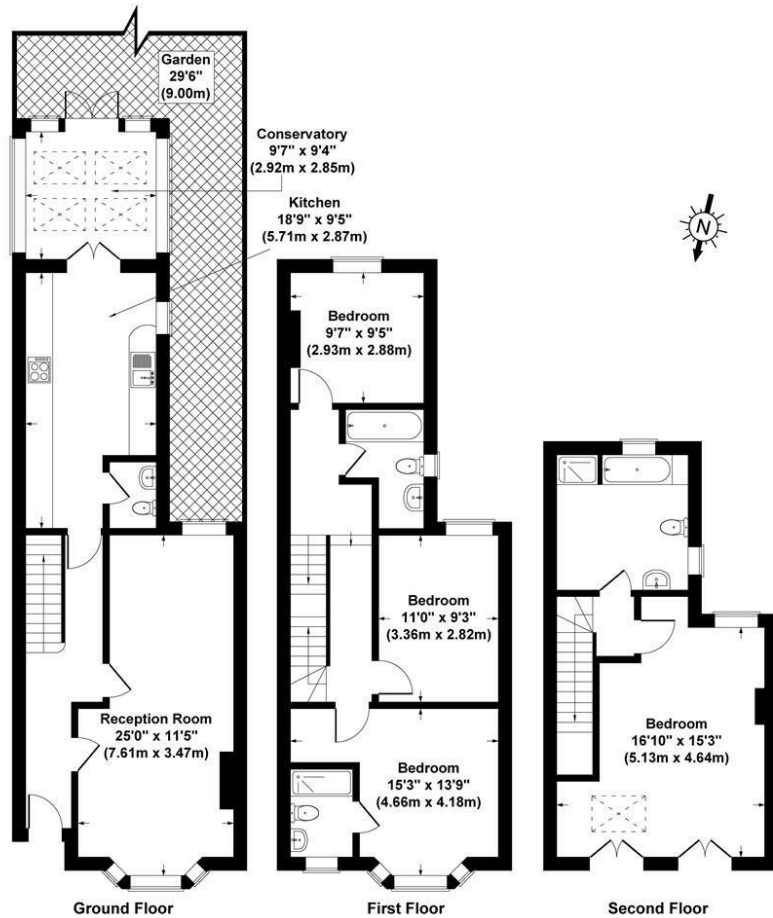


PER MONTH

£3,650 Per Month
Rutland Gardens

London, N4 1JR

EPC RATING: COUNCIL TAX BAND:



Rutland Gardens, London, N4
 Gross Internal Area 1582 sq ft / 147 sq metres
 Not to Scale. Produced by The Plan Portal 2019
 For Illustrative Purposes Only.



Energy Efficiency Rating		Current	Potential
Very energy efficient - lower running costs			
(92 plus)	A		
(81-91)	B		
(69-80)	C		
(55-68)	D		
(39-54)	E		
(21-38)	F		
(1-20)	G		
Not energy efficient - higher running costs			
England & Wales		EU Directive 2002/91/EC	



Agents Note: Whilst every care has been taken to prepare these particulars, they are for guidance purposes only. All measurements are approximate and are for general guidance purposes only and whilst every care has been taken to ensure their accuracy, they should not be relied upon and potential buyers/tenants are advised to recheck the measurements



OFFICE ADDRESS
 786-788 Green Lanes
 London
 N21 3RE

OFFICE DETAILS
 0208 800 1155
 management@paul-simon.co.uk